

Multi-function OTDR TR-360

Multi Language OTDR: Chinese, English, Spanish, Portuguese



Dimension: 21.5*18.5*8.5cm

Weight: 1kg

Model Details

TR-360	1310/1550nm , 24/22dB	Touching screen
--------	--------------------------	-----------------

Function

Standard Function	OTDR, Event Map, OPM, VFL, Laser Source, Loss Test, RJ45 Sequence, Torch Light, RJ45 Tracker
-------------------	--

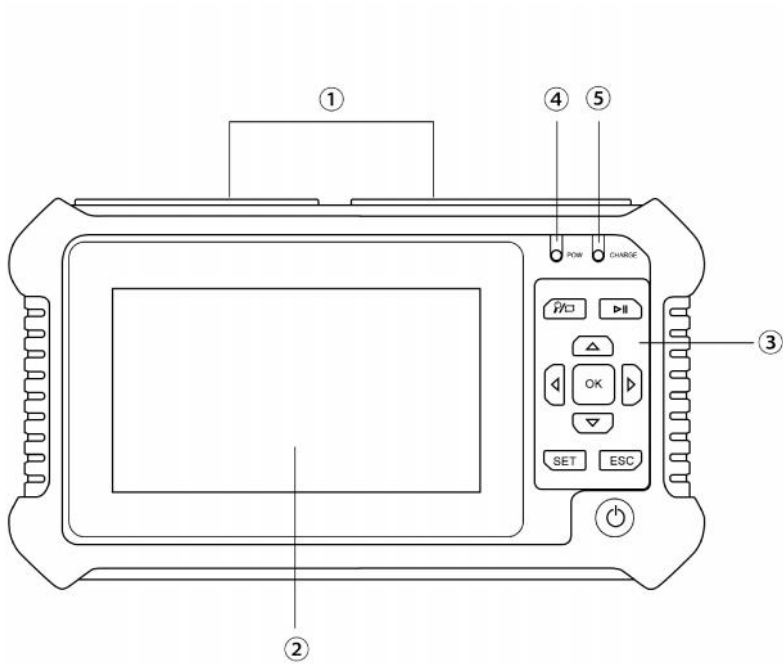
Features

1. Two wavelength: 1310/1550nm or single wavelength 1310/1550nm
2. Measurement distance: upto 80km
3. Capacitive touch screen, clear sensitive touch and quick response, can operate by both key and touching screen.
4. Test record is saved as .SOR format.
5. Standard function: OTDR, Event Map, Optical Power Meter, Optical Light Source, VFL, Optical Loss Test, RJ45 Sequence, Flash Light, RJ45 Tracker
6. Keyboard input, can edit and save file name and line number.
7. Support user upgrading.
8. With USB and TF card data interface, easy to export curve data.
9. Fast startup, only 2 seconds to test
10. Multi Language OTDR: Chinese, English, Spanish, Portuguese

Specifications

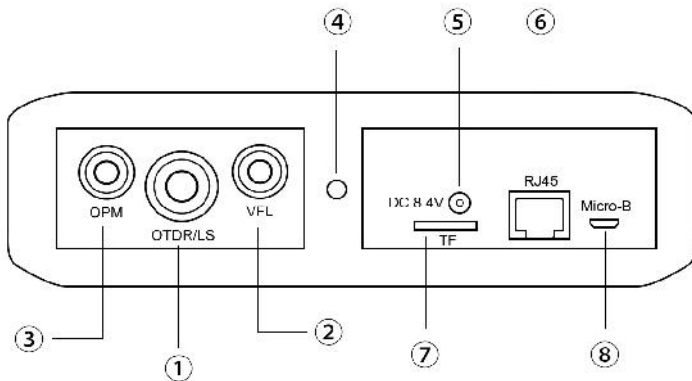
OTDR						
Wavelength(nm)	1310/1550nm	1310nm	1550nm	1610nm	1625nm	1650nm
Dynamic Range(dB)	24/22dB	24dB	22dB	22dB	22dB	22dB
Type of Fiber	9/125um SM					
Type of Connectors	FC/PC/; SC/PC (FC/APC SC/APC--Optional)					
Peak Value of laser	>=30mW					
Unit	Meter/ inch/ mile					
Dead Zone of Reflection	2m					
Dead Zone of attenuation Event	12m					
Accuracy Distance (Reflection Event)	About $\pm(1m+2 *10(-4)* \text{distance})$					
Storage of records	200 groups					
Visual Fault locator (VFL)						
Wavelength (nm)	650nm					
Output power	>=10mW					
Mode	CW, 1Hz, 2Hz					
Fiber type	SM					
Optical Power Meter						
Measurement range dBm	-70~+10 dBm			-50~+26 dBm		
Wavelength range (nm)	800~1650					
Calibrated wavelength	850/980/1270/1300/1310/1490/1550/1577/1625/1650					
Detector	InGaAs					
Accuracy	< $\pm 3\%$ (-10dBm、22 μ)					
Resolution	Linearity : 0.1%, Non-linearity : 0.01dBm					
Connector	Changeable FC/PC SC/PC (ST as Optional)					
Optical Light Source						
Emitter	FP-LD					
wavelength (nm)	1310/1550nm					
Connector	FC/PC (SC/ST as optional)					
Output power	≥ -5 dBm					
Output stability(dBm)	$\pm 0.04 @ 20\mu @ 15$ min					
Modulation	CW/270Hz/1KHz/2KHz					
Fiber type	SM					
Optic Loss						
Connector	FC/ SC					
Test Range	0-30dB					
Accuracy	10%					
Others						
LCD	3.97inch,800*480pixels, IPS screen					
Battery	Lithium-ion battery, >5000 tests					
Temperature	Work temperature: -5 ~ 50 ° C, storage temperature: -10 ~ 60 ° C					
Humidity	0~85%(Non-condensing)					
Dimensions (mm)	185×105×50					
Weight(g)	530					

Front Panel



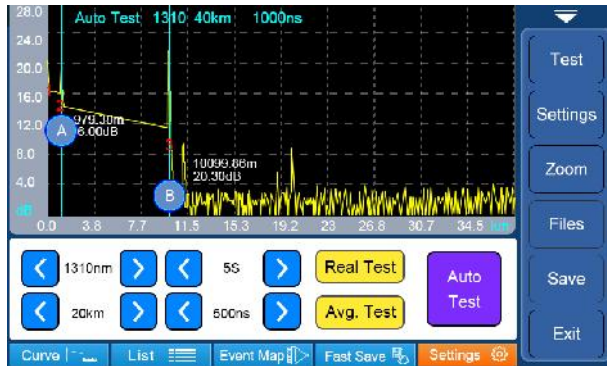
- 1 Dust cap
- 2 Capacitive touch screen
- 3 Function keys
- 4 Power-on indicator
- 5 Charge indicator

Top Port

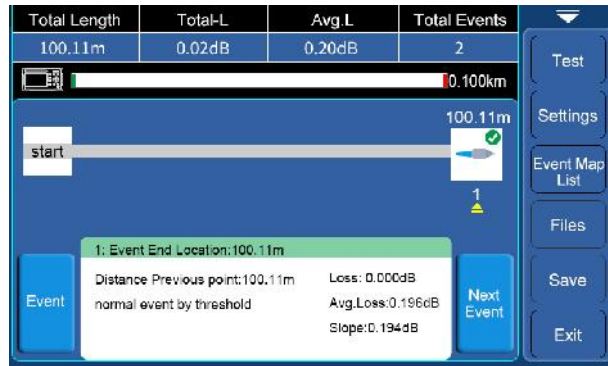


- 1 OTDR/LS optical connector
- 2 VFL connector
- 3 OPM connector
- 4 Flashlight
- 5 Power charge port
- 6 RJ45 port
- 7 TF card slot
- 8 Micro USB

Function Interface



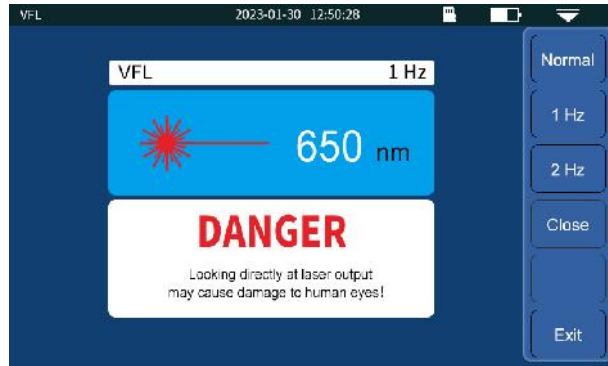
OTDR



Event Map



OPM



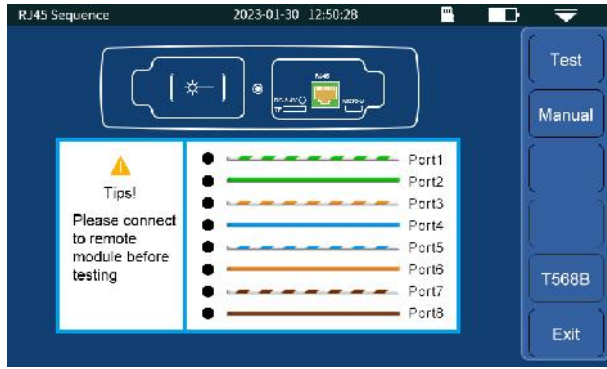
VFL



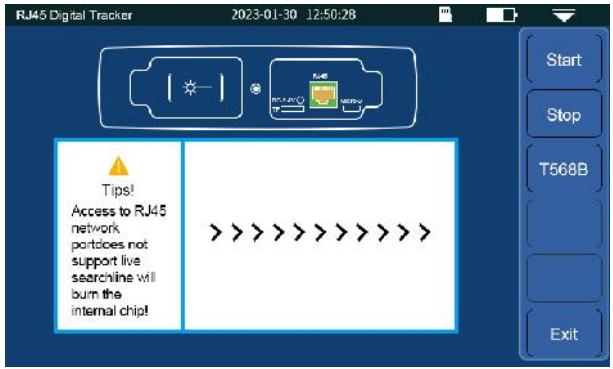
Laser Source



Loss Test



RJ45 Sequence



RJ45 Tracker

Packing List



Detailed Pictures



